

**Jason Josey**  
Manager Traffic Ops  
HERO Unit Incident Management  
Georgia Department of Transportation  
[jjosey@dot.ga.gov](mailto:jjosey@dot.ga.gov)  
(404) 635-2440



## Safety Service Patrol Idea Sharing Network – Session VII: SSP Vehicle Types and Selection



# GDOT HERO Unit



The GDOT HERO Unit is a full-service incident response unit dedicated to the safe, quick clearance of Metro Atlanta's interstate system.



# GDOT HERO Unit

---

We employ a number of different styles of trucks within the HERO Unit.

We have adapted our trucks to the ever-changing needs of our operators and the motoring public.

The upcoming photos will illustrate the different trucks currently employed by the Unit.



# Quick Strike Truck



Used within the Reversible Express Lanes and in high congestion areas to allow the operators to quickly and safely maneuver through traffic.



# Box Truck



Utilized throughout our coverage area. These trucks have the capability to off-load diesel fuel.





# The Beast





# The Beast



These trucks are utilized on the outer routes, away from the downtown congested areas. These trucks are capable of carrying additional supplies to handle large situations with little or no assistance.



# Supervisor Truck



# Supervisor Truck

These open trucks allow the supervisor to stock additional supplies to provide to operators on the road, removing the need for operators to return to the office to resupply. These trucks also allow rapid response by the supervisors.



# Administration



# Administration



# HERO Drone



# HERO Drone



Though in-service only a short time, our Drone has already been deployed on a number of incidents to include TRIPs, Hazmat spills, fires, and the bridge collapse on I-85



# I-85 Bridge Fire and Collapse

---





# Drone View of I-85 Bridge Collapse



# Drone View of Rebuilt I-85 Bridge



# Equipment



All trucks are equipped with mobile computers for dispatching and locating, as well as radios.

# Emergency Equipment



# Message Boards



# Slide Out Trays



Trucks are equipped with slide out trays to assist operators in removing equipment without having to climb into the back of the truck.

# Doors



All new trucks are being ordered with sliding doors. These doors reduce exposure to passing traffic.

# Equipment



All trucks are equipped with extra fuel for motorists, basic hand tools, and absorbent pads.



# Equipment



In addition, all trucks have pitch forks, saws, shovels, flares, cones, logging chains, single and double J hooks.

# Equipment



All trucks are equipped with fire extinguishers and multiple bags of absorbent.

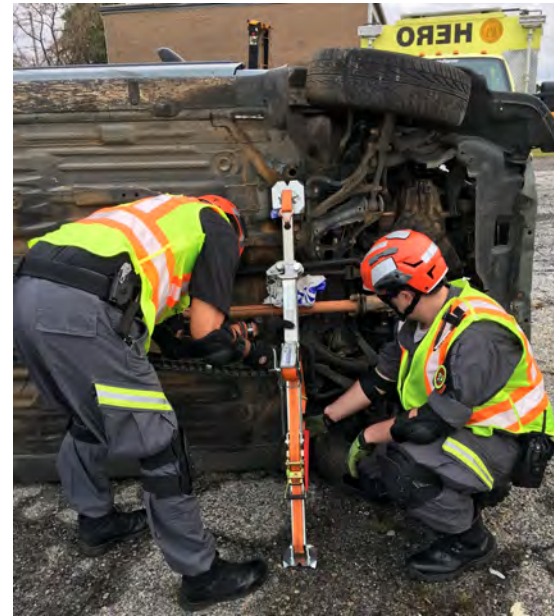
# Specialized Equipment



Some trucks are equipped with specialized equipment – blowers, generators, and power sweepers.

# Specialized Equipment

Due to the potential for extended response times for Fire and EMS in our new Reversible Managed Lanes, we are now outfitting our Master Operators with vehicle stabilizing and extrication equipment.



# Safety Striping



All new trucks are being marked with retro-reflective striping on the rear of the vehicles and all older trucks are being retro-fitted with this striping

# Push Bumpers



All vehicles, including Administration vehicles, are equipped with push bumpers to assist operators in relocating disabled vehicles from the roadway.

# Updating and Evaluating Equipment

---

We are constantly on the lookout for new ideas and equipment that will allow us to improve our safety and performance.

Much of our new equipment has come from ideas and suggestions submitted by our operators.



**Jason Josey**  
Manager Traffic Ops  
HERO Unit Incident Management  
Georgia Department of Transportation  
[jjosey@dot.ga.gov](mailto:jjosey@dot.ga.gov)  
(404) 635-2440



## Safety Service Patrol Idea Sharing Network – Session VII: SSP Vehicle Types and Selection

