

Introducing...

Brian C. Hoeft

Director of FAST (Freeway and Arterial System of Transportation)
Regional Transportation Commission of Southern Nevada

hoeftb@rtcsonv.com

(702) 357-6928



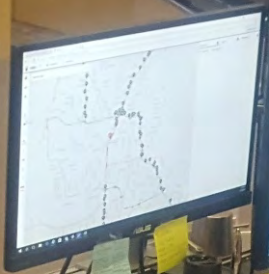
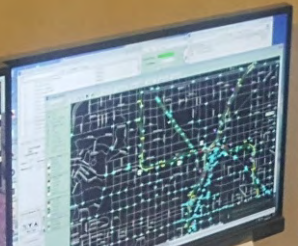
Las Vegas Example



A connected way forward

AI-driven mobility solutions for smart cities

[CONTACT US](#)



#VEGASSTRONG

FAST

Seamless Communication Across Agencies

NHP



NDOT/FSP



RTC/FAST

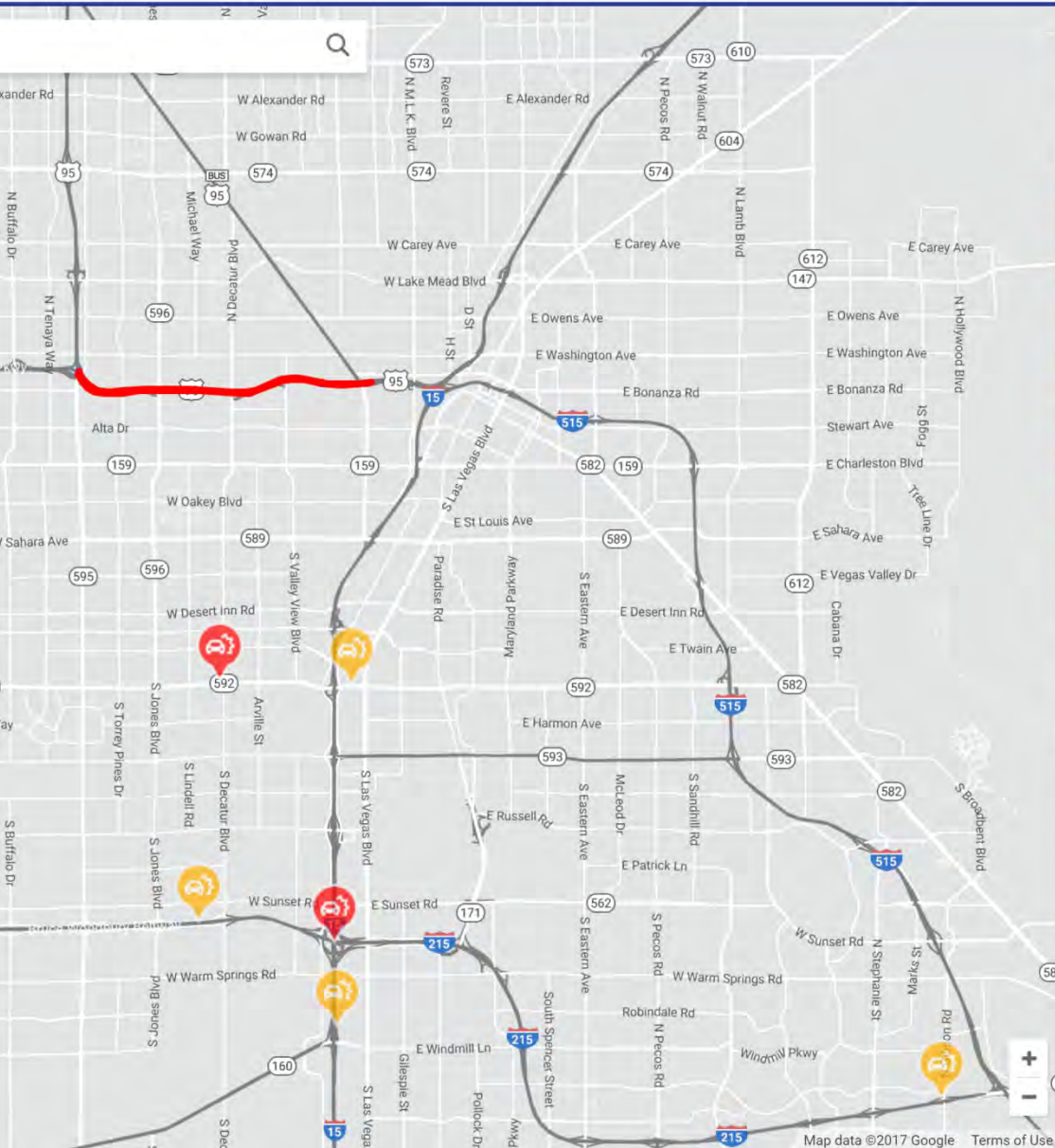


Community/Residents



Navigation Services





INCIDENTS 0 TRAFFIC 2 IN PROGRESS 6

SORT BY: TIME CREATED

REQUIRES ACTION

- !

15/215;S NB OVER ACC MEDICAL ...
📍 25 minutes ago
- !

FLAMINGO/604; EB WO ACC NO ...
📍 38 minutes ago
- !

215/JONES; S EB EO ACC NO ME...
📍 an hour ago
- !

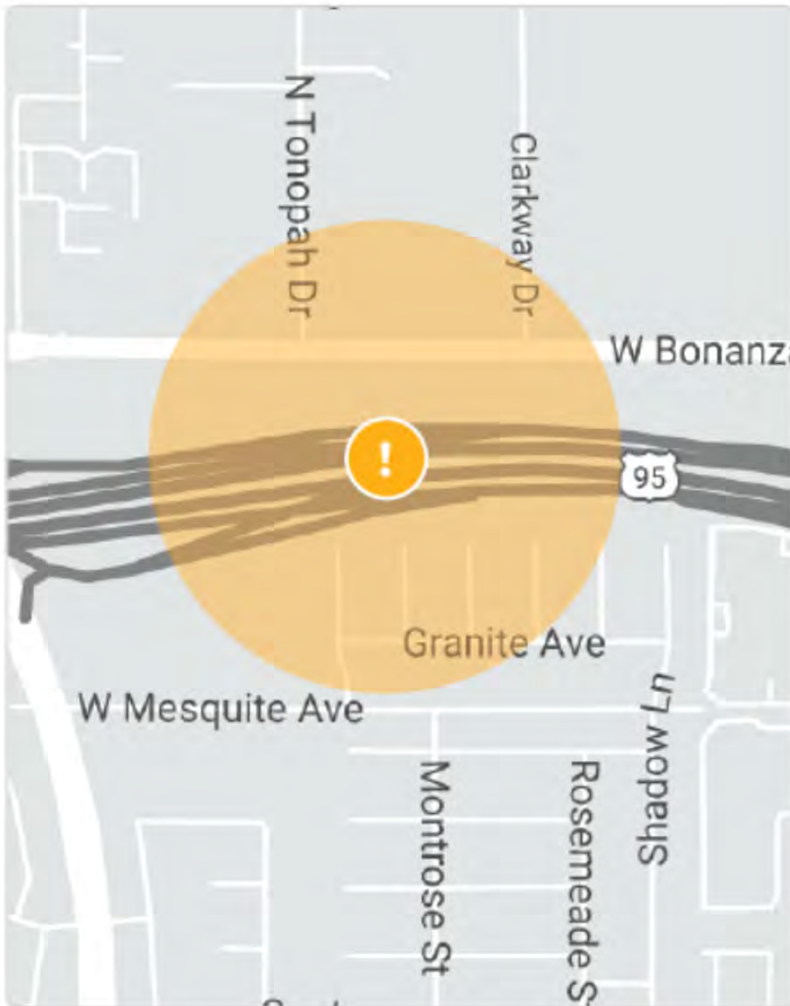
215/STEPHANIE; WB ACC NO MEDIC ...
📍 an hour ago
- !

EB Flamingo Decatur
📍 an hour ago
- !

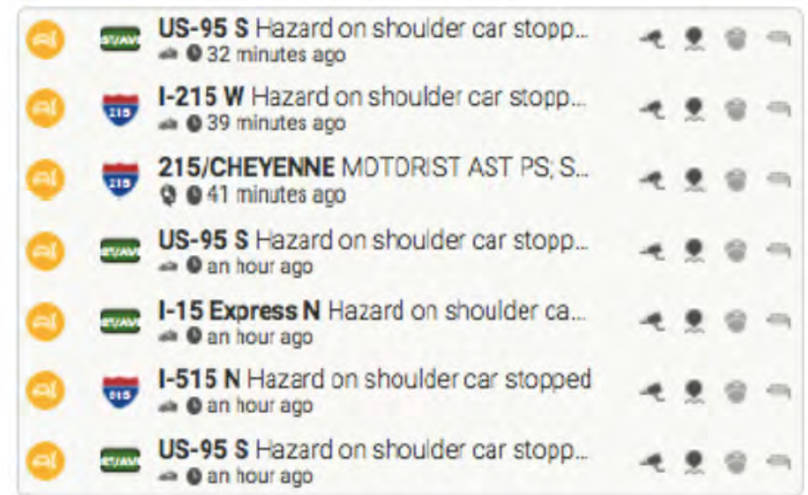
160/15; TO GO 15 NB ON CD ACC ...
📍 2 hours ago

ONGOING

OPEN INCIDENTS



10-12 minutes faster response time with the help of Waycare early alerts that detect incidents before being called in.



FAST technicians are now aware of non-crash incidents (debris, vehicle stopped on should of road).



FAST providing critical visual aid of incident to first responders with use of cameras.

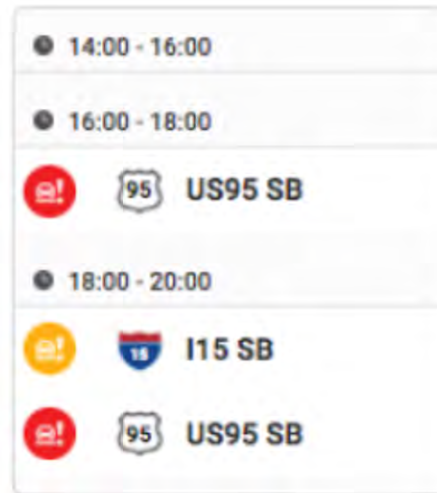
This feature has proven critical in improved tactical response and situational awareness of NHP.

Lane identification has helped reduce radio chatter by allowing first responders to prepare a course of action before arriving at the scene.



Predictive Analytics

Leveraging deep learning technologies, the Waycare platform has trained on over three years of historical crash data and assessed both road conditions and weather elements to identify near term, forward looking alerts of dangerous road segments with a high likelihood of an incident to occur.



Waycare launched the feature in September on two corridors on I-15 and US 95 and has been working both with FAST operators along with NHP sergeants to devise proactive preventative measures.

Lesson Learned

As Waycare expands the scope of the predictive analytics solution, RTC can begin exploring direct communication to vehicles with proactive alerts. This includes dangerous roads, congested areas to avoid (diversion routes), road closures, etc. This can be achieved initially through partnerships with navigation providers and telematics. However, in the near future, direct communication over wireless network can be established directly with the OEMs and connected vehicles.

Model for Autonomous Vehicle (ATV) management—begin exploring proactive and predictive transportation management solutions with ATV and autonomous transit.

Cross Agency Communication

Over the past five months, Waycare has implemented four platforms across multiple agencies: FAST/RTC, NDOT Las Vegas Roads, Nevada Freeway Service Patrol, and Nevada Highway Patrol. Each one of these platforms was designed and built to be fully integrated with other relevant agencies.

For RTC, this has meant that FAST has not only taken on a key role in identifying more incidents that are happening on the freeways and arterials in Southern Nevada, but it has also enabled them to assist with critical traffic incident and congestion related information to first responders.



Visual confirmation of incident



NHP using FAST incident reports

Questions?

Brian C. Hoeft

Director of FAST (Freeway and Arterial System of Transportation)
Regional Transportation Commission of Southern Nevada

hoeftb@rtcsonv.com

(702) 357-6928

