

WORKING WITH FIRE RESCUE



Marc Bashoor

- Public Safety Director/Fire Chief, Highlands County Florida
- Executive Editor, FireRescue1.com & FireChief.com

Previous Experience:

- Fire Chief, Prince George County Maryland Fire/EMS
- Emergency Manager, Mineral County West Virginia



WORKING WITH FIRE RESCUE

- Understand the statutory authorities/responsibilities that different agencies have. Who has EMS?
- Build relationships in advance with local fire rescue and EMS and federal level responders
- Dynamic differences between states and municipalities
- Dysfunction the higher it gets (i.e. the federal level)
- Train on the incident command system
- Ensure inter-disciplinary training and pre-planning
- Prepare for competing priorities as incidents expand
- Ensure SSP operators have the appropriate radio systems to communicate with the fire department, and that you understand their “lingo”... supposed to be “plain language... BUT...”



INCIDENT COMMAND SYSTEM

- Understand the concepts of command & control – accountability & safety
- Roles, responsibilities & authorities
- Think out side the box, but stay in your lane
- Understand the concepts of command post management
- L A B O R
- Safety & Demobilization

L.A.B.O.R

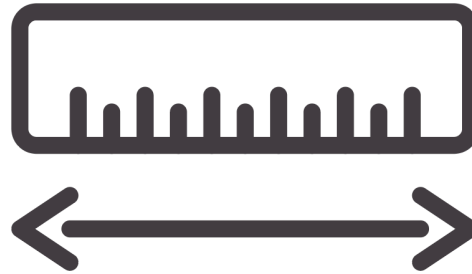
- Location
- Announce
- Box
- Observe
- Relax



GET THERE, GET DONE, GET OUT!



TIME
Limit your time
on target



DISTANCE
Distance
yourself from
the hazard

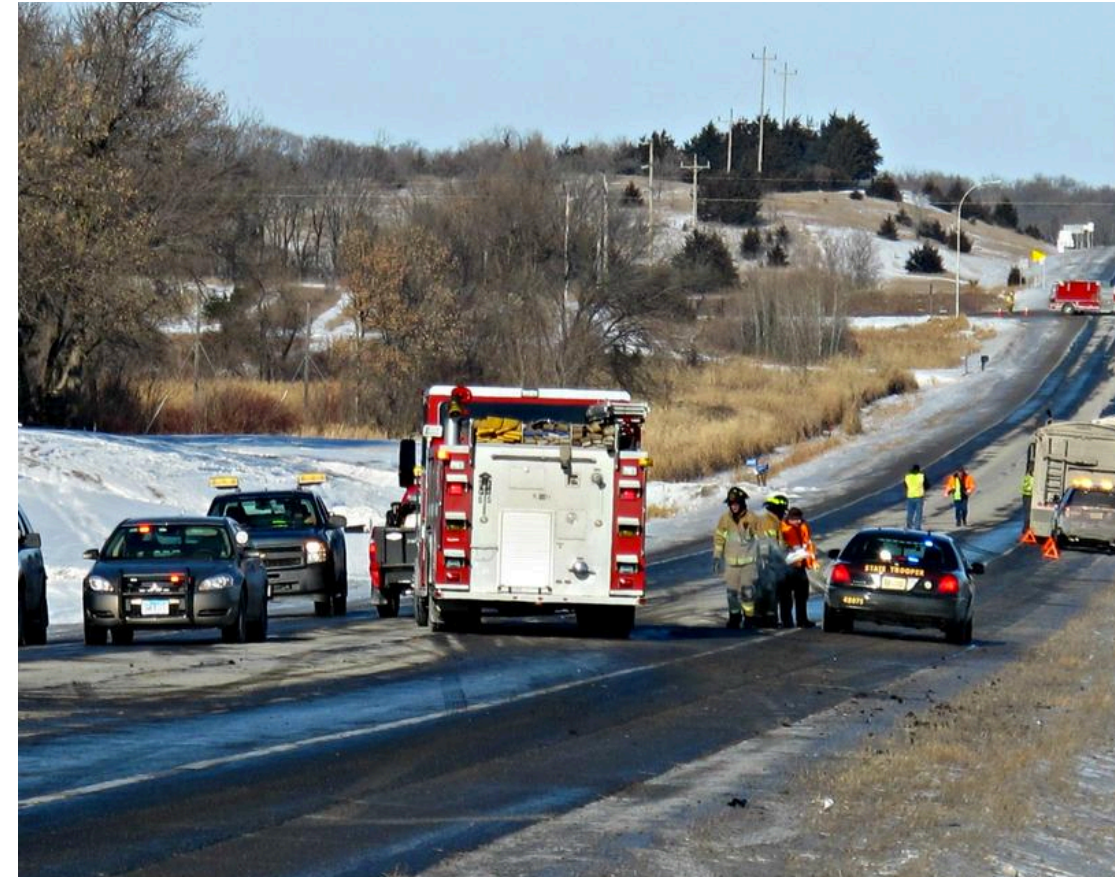


SHIELDING
Protect yourself from
the hazard and
secondary incidents



WORKING WITH FIRE RESCUE ON SITE

- Limit personnel on scene to only those that are necessary
- Early on, communicate lane designations and allow fire trucks to block lanes
- Be mindful and alert of your surroundings (sight, smell, and sound)
- Understand each others' roles to allow better coordination
- Rely on each responders' areas of expertise
- Ensure proper communication system is in place
- Be specific in terms of scene evaluation when calling upon fire rescue



HAZARDOUS MATERIALS & THE HIGHWAY

- Placards & the ERG - Communicate
- The known and the unknown
- Runoff and contamination, anticipation
- Long term incidents, early thoughts to rerouting
- Decontamination & demobilization

